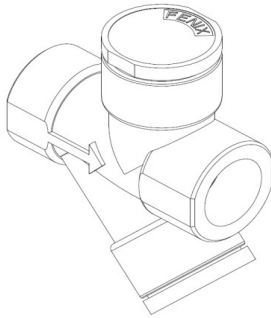




Technical Specification

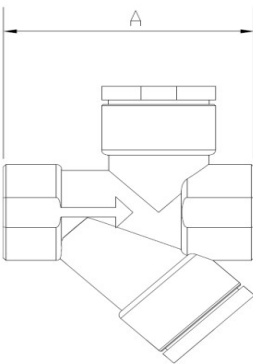
EF- SW Socket Welded



General Description

The EF-SW trap is designed for low flow applications such as line drainage and trace heating. The trap is designed for higher pressure applications where it is desirable to weld the traps in line. The trap and cap surfaces have a concentric grooved surface. The trap has an integral strainer and removable nozzle. The body of the trap does not have to be removed for maintenance purposes.

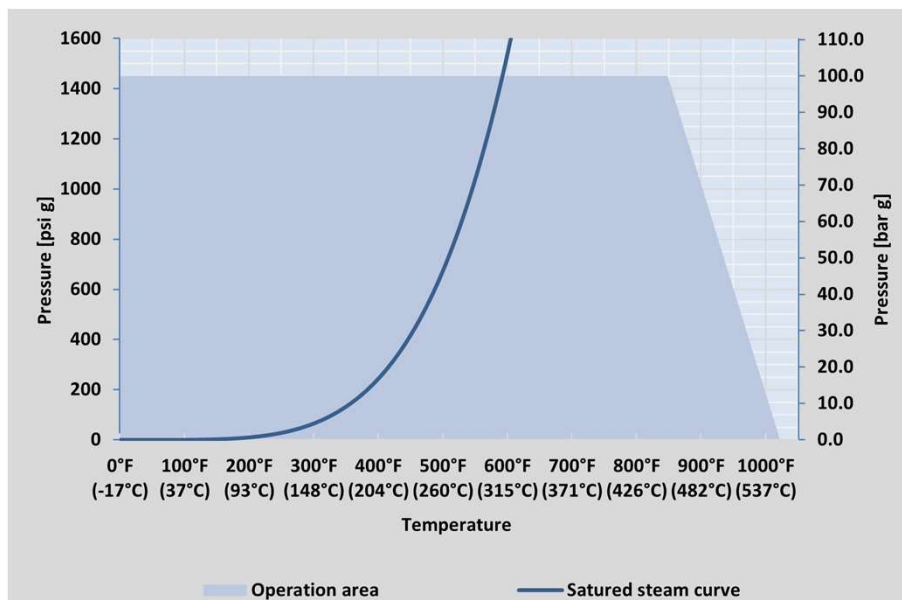
Dimensions



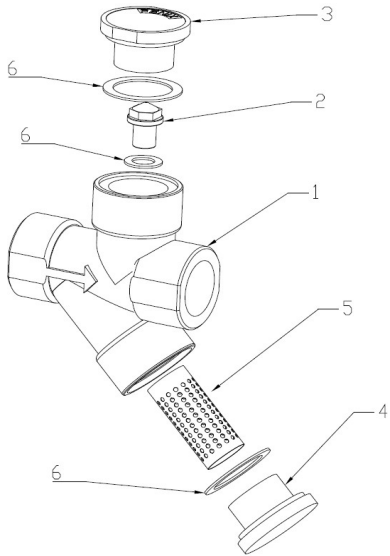
Size	A	Weight (approx.)
½" (DN15)	3.15" (80 mm)	2.39 lb (1.08 kg)
¾" (DN20)	3.46" (88 mm)	2.43 lb (1.10 kg)

Operating Parameters (ISO 6552:1980)

PMA 1450 psig (100 barg)
 TMA 1022°F (550 °C)
 PMO 1450 psig (100 barg) @ 842°F (450°C)
 TMO 1022°F (550 °C) @ 0 psig (0 barg)
 Hydraulic cold tested to 2175 psig (150 barg)



To promote the continued improvement, we reserve the right to change the specification



Components

No.	Part	Material
1	Cast stainless steel body	CF8M
2	Removable nozzle	304L stainless steel
3	Nozzle cap	304L stainless steel
4	Strainer cap	304L stainless steel
5	Strainer filter	50 mesh stainless steel
6	Gaskets	Graphite with stainless steel mesh

Spare parts

Part	Code
Strainer Filter	F-S
Cap Gasket	G-4
Nozzle Gasket	G-1